

Children and Young People's Overview and Scrutiny Committee

16 January 2017



Quarter 2 2016/17 Performance Management Report

Report of Corporate Management Team

Lorraine O'Donnell, Director of Transformation and Partnerships
Councillor Simon Henig, Leader

Purpose of the Report

1. To present progress against the council's corporate performance framework for the Altogether Better for Children and Young People priority theme for the second quarter of the 2016/17 financial year, covering the period July to September 2016.

Background

2. Work is underway to review how we present performance information in the clearest possible way. This quarter we have tightened the format of the report to make it more concise. We have included an Executive Summary which outlines key performance messages from data released this quarter. We have reviewed the Altogether theme moving from a narrative format to an at a glance, more visual style presentation of one summary page per Altogether theme which presents key data messages showing, where available, the latest position in trends and how we compare to others.
3. A more comprehensive table of all performance data is presented as usual in Appendix 3.
4. Key performance indicator progress is still reported against two indicator types which comprise of:
 - a. Key target indicators – targets are set for indicators where improvements can be measured regularly and where improvement can be actively influenced by the council and its partners; and
 - b. Key tracker indicators – performance will be tracked but no targets are set for indicators which are long-term and/or which the council and its partners only partially influence.
5. We will continue to look at ways to further develop the format of the report, as part of the transformation programme, to provide a clearer way of understanding how the council is performing, with the leanest possible process.

6. An outline of the colour rating applied to our performance and the groups we use to compare ourselves is outlined in Appendix 2.
7. To support the complete indicator set, a guide is available which provides full details of indicator definitions and data sources for the 2016/17 corporate indicator set. This is available to view either internally from the intranet (at Councillors useful links) or can be requested from the Corporate Planning and Performance Team at performance@durham.gov.uk.

Executive Summary

Key performance messages from data released this quarter

8. The council has a responsibility for safeguarding and promoting the development of all children and young people in County Durham. This includes specific duties in relation to three key areas; our corporate parent role for looked after children; child assessment and safeguarding; and delivery of universal services such as early help, education and health.
9. At September 2016 there were 731 looked after children (LAC) in County Durham, more than last year (661). The increased rate reflects a national and regional trend. The upward trajectory in County Durham is felt to reflect better social work practice, particularly in relation to the identification of neglect. It is not anticipated that the recent upward trend will significantly decrease as the majority of LAC in County Durham have a long-term plan for permanence eg. children are placed with foster carer (currently around 70%). The number of LAC continues to be monitored closely by Children and Young People's Service senior management to ensure looked after arrangements are appropriate and children have access to suitable care to meet their needs.
10. Timeliness of care plan reviews has worsened for looked after children however all reviews have now been completed and strategies have been put in place to prevent future delays. Looked after children reviews show there were four reviews held out of timescale, involving seven children.
11. Turning to assessment and safeguarding services, between April and September 2016, there were 2,354 referrals of children in need (CiN). This is fewer than last year (3,282), but it is of concern that the proportion of re-referrals (occurring within 12 months of previous referral) has increased. Work is underway to look at this through an audit. More children are having their assessments done on time, a significant improvement. Although the target was not met all immediate safeguarding referrals were processed within 24 hours. The service continues to address challenges with recruitment and retention of social work staff in the Family First team and Child Protection team as identified in the Ofsted report.
12. Timeliness of care plan reviews for children subject to a child protection plan has worsened with five child protection reviews, relating to eight children, held out of timescale in quarter two. All reviews are now complete. There are various reasons which led to reviews having to be rearranged and therefore going out of

timescale including parental attendance and unavailability of conference reports. The review is an important element of ensuring the quality of care for children and young people and strategies have been put in place by the Independent Reviewing Officer Service to ensure the timing of reviews is closely monitored to try to prevent further reviews going out of timescales.

13. Performance in relation to universal services around child health shows under 18 conceptions continue to reduce and are the lowest since reporting began in 1998 although not as low as the England average. The number of mothers smoking at delivery has reduced from last year but remains worse than regional and national comparators.
14. In relation to educational attainment, children in Durham are performing well across the different key stages. Provisional figures for 2015/16 show children in early years have higher achievement rates than last year, a rate that is in line with national and regional averages. At GCSE level, the new government measure, Attainment 8 has been introduced to focus on pupils' performance across their best eight qualifications measured on a points award basis, with each grade worth points on an ascending scale. Under this new system, Durham's GCSE results are in line with national and regional averages. At A level, there is also a newly introduced measure, the Average Point Score, translating letter grades into numbers and pupils in Durham are performing better than the national and regional average.

Volume of Activity

15. Although the number of children in need referrals received reduced this period, the number of children with a child protection plan and the number of looked after children cases continue to increase. The latest position in volume trends is presented in the charts available at Appendix 4.

Risk Management

16. Effective risk management is a vital component of the council's agenda. The council's risk management process sits alongside our change programme and is incorporated into all significant change and improvement projects.
17. The key risks in delivering the ambitions of this priority theme and how we are managing them is:

Altogether Better for Children and Young People: *Failure to protect a child from death or serious harm (where service failure is a factor or issue).* Management consider it possible that this risk could occur which, in addition to the severe impacts on children, will result in serious damage to the council's reputation and to relationships with its safeguarding partners. To mitigate the risk, actions are taken forward from serious case reviews and reported to the Local Safeguarding Children Board. Lessons learned are fed into training for front line staff and regular staff supervision takes place. This risk is long term and procedures are reviewed regularly. (critical / possible)

Key data messages by Altogether Theme

18. The next section provides a one page summary of key data messages for the Altogether Better for Children and Young People theme. The format of the Altogether theme has been revised to provide a snap shot overview aimed to ensure that key performance messages are easy to identify. The Altogether theme is supplemented by information and data relating to the complete indicator set, provided at Appendix 3.

Altogether Better for Children and Young People

Corporate parenting

731 Looked after children (LAC) (30 Sep16), more than last year (661)



LAC reviews completed within timescale (Tracker PI)

96.2%

- At Sep 16 there were 731 LAC in the county, around 70% of these have a plan for permanence.
- Durham's LAC rate (72.9 per 10,000) is better than North East average (84) but worse than England average (60).
- ✓ At Key stage 4, GCSE Average Attainment 8 score of looked after children is 31.5.
- ✓ Review of support for young people moving from Children's Services into adult social care completed ahead of schedule (Mar 17).

Education- provisional data

A new way to judge the pupils' attainment at GCSE and A levels has been introduced by translating pupils' attainment grades into points.

Early Years
69%



Children in early years achieving good level of development, met target of 64%, in line with North East (68.4%) and national (69.3%) averages.

KS 4
49 points



GCSE Average Attainment 8 Score, in line with North East (48.5 points) and England (49.8 points) averages.

KS4 gap
12.3 points

Gap between disadvantaged pupils in Durham and non-disadvantaged pupils in England at Key stage 4, comparative data are available in Jan 17.

KS 5
31.7 points



Average A level entry of state funded school students, better than National (30.7 points) and North East (30.4 points) averages.

Child safeguarding: How are we responding?

Child's journey

2,354 Children in need referrals (CiN) (Apr-Sep 16), fewer than last year (3,189).

1,952 Single Assessments(Apr-Sep 16), fewer than last year (2977).

406 Children with a child protection plan (CPP) (30 Sep 16), more than last year (340).

161 Child sexual exploitation referrals (Oct 15-Sep16), 17% fewer than last year.

First contact enquiries processed in 24 hrs Target of 85% not met

71.5%

CiN referrals occurred within 12 months of previous referral

23.8%

Target of 20.7% not met

Single assessments completed in 45 days Target of 85% not met

82%

Children with a CPP with all reviews completed within timescale (Tracker)

91.4%

✓ Durham's **Children with a CPP** rate (40.5 per 10,000) is better than both North East (59.6) and England (43.1) averages.

Health

Under 18 conception rate (per 1,000 population) Lowest since reporting began in 1998 (Jul 14-Jun 15).

Durham	North East	England
26.4 (222 conceptions)	28.6 ✓	21.8 ✗

Mothers smoking at time of delivery*
Achieved target (17.2%) and is an improvement on last year (18.1%).

Durham	North East	England
16.6%	15.6% ✗	10.2% ✗

*The Durham Dales, Easington and Sedgefield Clinical Commissioning Group area has the second highest rate in the North East and ninth highest in England.

Recommendations and Reasons

19. That the Children and Young People's Overview and Scrutiny Committee receive the report and consider any performance issues arising there with.

Contact: Jenny Haworth, Head of Planning and Performance

Tel: 03000 268071 E-Mail jenny.haworth@durham.gov.uk

Appendix 1: Implications

Appendix 2: Report Key

Appendix 3: Summary of key performance indicators

Appendix 4: Volume measures

Appendix 1: Implications

Finance - Latest performance information is being used to inform corporate, service and financial planning.

Staffing - Performance against a number of relevant corporate health Performance Indicators (PIs) has been included to monitor staffing issues.

Risk - Reporting of significant risks and their interaction with performance is integrated into the quarterly monitoring report.

Equality and Diversity / Public Sector Equality Duty - Corporate health PIs are monitored as part of the performance monitoring process.

Accommodation - Not applicable

Crime and Disorder - A number of PIs and key actions relating to crime and disorder are continually monitored in partnership with Durham Constabulary.

Human Rights - Not applicable

Consultation - Not applicable

Procurement - Not applicable

Disability Issues - Employees with a disability are monitored as part of the performance monitoring process.

Legal Implications - Not applicable

Appendix 2: Report key

Performance Indicators:

Direction of travel/benchmarking

Performance against target

Same or better than comparable period/comparator group

GREEN

Meeting/Exceeding target

Worse than comparable period / comparator group (within 2% tolerance)

AMBER

Getting there - performance approaching target (within 2%)

Worse than comparable period / comparator group (greater than 2%)

RED

Performance >2% behind target

National Benchmarking

We compare our performance to all English authorities. The number of authorities varies according to the performance indicator and functions of councils, for example educational attainment is compared to county and unitary councils however waste disposal is compared to district and unitary councils.

North East Benchmarking

The North East figure is the average performance from the authorities within the North East region, i.e. County Durham, Darlington, Gateshead, Hartlepool, Middlesbrough, Newcastle upon Tyne, North Tyneside, Northumberland, Redcar and Cleveland, Stockton-on-Tees, South Tyneside, Sunderland. The number of authorities also varies according to the performance indicator and functions of councils.

Nearest Neighbour Benchmarking:

The nearest neighbour model was developed by the Chartered Institute of Public Finance and Accountancy (CIPFA), one of the professional accountancy bodies in the UK. CIPFA has produced a list of 15 local authorities which Durham is statistically close to when you look at a number of characteristics. The 15 authorities that are in the nearest statistical neighbours group for Durham using the CIPFA model are: Barnsley, Wakefield, Doncaster, Rotherham, Wigan, Kirklees, St Helens, Calderdale, Dudley, Northumberland, Tameside, Sheffield, Gateshead, Stockton-on-Tees and Stoke-on-Trent.

We also use other neighbour groups to compare our performance. More detail of these can be requested from the Corporate Planning and Performance Team at performance@durham.gov.uk.

Actions:

WHITE

Complete (action achieved by deadline/achieved ahead of deadline)

GREEN

Action on track to be achieved by the deadline

RED

Action not achieved by the deadline/unlikely to be achieved by the deadline

Appendix 3: Summary of Key Performance Indicators

Table 1: Key Target Indicators

Ref	PI ref	Description	Latest data	Period covered	Period target	Current performance to target	Data 12 months earlier	Performance compared to 12 months earlier	National figure	*North East figure **Nearest statistical neighbour figure	Period covered
Altogether Better for Children and Young People											
17	CASCYP 15	Percentage of children in the early years foundation stage achieving a good level of development	69.0	2015/16 ac yr (provisional)	64.0	GREEN	63.6	GREEN	69.3	68.4*	2015/16 ac yr (provisional)
18	CASAS5	First time entrants to the youth justice system aged 10 to 17 (per 100,000 population of 10 to 17 year olds) (Also in Altogether Safer)	193	Apr - Sep 2016	291	GREEN	164	RED			
19	CASCYP 9	Percentage of children in need referrals occurring within 12 months of previous referral	23.8	Apr - Sep 2016	20.7	RED	21.8	RED	24	22.3*	2014/15
20	CASCYP 31	Percentage of first contact enquiries processed within one working day	71.5	Apr - Sep 2016	85.0	RED	50.7	GREEN			
21	CASCYP 32	Percentage of single assessments completed within 45 days	82.0	Apr - Sep 2016	85.0	RED	76.7	GREEN	81.5	84.9*	2014/15
22	CASCYP 14	Percentage of successful interventions (families turned around) via the Stronger Families Programme (Phase 2) (Also in Altogether Safer) [1]	7.2	Sep 2014 - Sep 2016	TBC	NA	NA	NA	NA		

Ref	PI ref	Description	Latest data	Period covered	Period target	Current performance to target	Data 12 months earlier	Performance compared to 12 months earlier	National figure	*North East figure **Nearest statistical neighbour figure	Period covered
23	CASCYP 8	Percentage of mothers smoking at time of delivery (Also in Altogether Healthier)	16.6	Apr - Jun 2016	17.2	GREEN	18.1	GREEN	10.2	15.6*	Apr - Jun 2016
									RED	RED	

[\[1\] Reported as a % target PI again following 2015/16 when the numbers were reported as a tracker indicator](#)

Table 2: Key Tracker Indicators

Ref	PI ref	Description	Latest data	Period covered	Previous period data	Performance compared to previous period	Data 12 months earlier	Performance compared to 12 months earlier	National figure	*North East figure **Nearest statistical neighbour figure	Period covered
Altogether Better for Children and Young People											
113	CASCYP 33	Average attainment 8 score/score for LA (all pupils at the end of key stage 4 in state-funded mainstream and special schools and academies - replacing GCSE attainment)	49	2015/16 ac yr (provisional)	New indicator	NA	New indicator	NA	49.8	48.5*	2015/16 ac yr (provisional)
									AMBER	GREEN	
114	CASCYP 37	Average point score per A level entry of state-funded school students	31.7	2015/16 ac yr (provisional)	New indicator	New indicator	NA	NA	30.7	30.39*	2015/16 ac yr (provisional)
									GREEN	GREEN	
115	CASCYP 16	Percentage of 16 to 18 year olds who are not in education, employment or training (NEET) (Also in Altogether Wealthier) [2]	6.3	Jul - Sep 2016	6.1	RED	7.7	GREEN			
116	CASCYP 34	Gap between the average Attainment 8 score of Durham disadvantaged pupils and the average Attainment 8 score of non-disadvantaged pupils nationally (at KS4)	12.3	2015/16 ac yr (provisional)	New indicator	NA	New indicator	NA			

Ref	PI ref	Description	Latest data	Period covered	Previous period data	Performance compared to previous period	Data 12 months earlier	Performance compared to 12 months earlier	National figure	*North East figure **Nearest statistical neighbour figure	Period covered
117	CASCYP 35	Gap between the percentage of Durham disadvantaged pupils and the percentage of non-disadvantaged pupils nationally who achieve the expected standard in reading, writing and maths (at KS2)	New indicator	NA	New indicator	NA	New indicator	NA			
118	ACE016	Percentage of children in poverty (quarterly proxy measure) (Also in Altogether Better Council)	22.1	As at May 2016	22.2	GREEN	22.4	GREEN	15.5 RED	22.6* GREEN	As at May 2016
119	CASCYP 18	Percentage of children aged 4 to 5 years classified as overweight or obese (Also in Altogether Healthier)	23.0	2014/15 ac yr	23.8	GREEN	23.8	GREEN	21.9 RED	23.7* GREEN	2014/15 ac yr
120	CASCYP 19	Percentage of children aged 10 to 11 years classified as overweight or obese (Also in Altogether Healthier)	36.6	2014/15 ac yr	36.1	AMBER	36.1	AMBER	33.2 RED	35.9* AMBER	2014/15 ac yr
121	CASCYP 29	Proven re-offending by young people (who offend) in a 12 month period (%) (Also in Altogether Safer)	45	2014	46.9	GREEN	44.4	AMBER	37.9 RED	44.9* AMBER	2014
122	CASCYP 20	Under 18 conception rate per 1,000 girls aged 15 to 17	26.4	Jul 2014 - Jun 2015	27.5	GREEN	29.0	GREEN	21.8 RED	28.6* GREEN	Jul 2014 - Jun 2015

Ref	PI ref	Description	Latest data	Period covered	Previous period data	Performance compared to previous period	Data 12 months earlier	Performance compared to 12 months earlier	National figure	*North East figure **Nearest statistical neighbour figure	Period covered
123	CASCYP 21	Under 16 conception rate per 1,000 girls aged 13 to 15	5.8	2014	7.9	GREEN	7.9	GREEN	4.4 RED	6.5* GREEN	2014
124	CASCYP 23	Emotional and behavioural health of children looked after continuously for 12 months or more (scored between 0 to 40)	14.9	2015/16 (provisional)	15.1	GREEN	15.1	GREEN	13.9 RED	13.9* RED	2013/14
125	CASCYP 30	Percentage of Child and Adolescent Mental Health Services (CAMHS) patients who have attended a first appointment within nine weeks of their external referral date	83.1	Apr - Sep 2016	70.3	GREEN	81.7	GREEN			
126	CASCYP 26	Young people aged 10 to 24 years admitted to hospital as a result of self-harm (rate per 100,000 population aged 10 to 24 years) (Also in Altogether Healthier)	489.4	2011/12 - 2013/14	504.8	GREEN	504.8	GREEN	367.3 RED	532.2* GREEN	England 2011/12-2013/14 NE 2010/11-2012/13
127	CASCYP 28	Rate of children with a child protection plan per 10,000 population	40.5	As at Sep 2016	35.7	RED	33.9	RED	43.1 GREEN	59.6* GREEN	As at Mar 2016
128	CASCYP 12	Percentage of children subject to a child protection plan who had all of their reviews completed within required timescales	91.4	Apr - Sep 2016	93.8	RED	97.1	RED	94 RED	94.6* RED	2014/15

Ref	PI ref	Description	Latest data	Period covered	Previous period data	Performance compared to previous period	Data 12 months earlier	Performance compared to 12 months earlier	National figure	*North East figure **Nearest statistical neighbour figure	Period covered
129	CASCYP 36	Number of child sexual exploitation referrals	161	Oct 2015 - Sep 2016	193	NA	193	NA			
130	CASCYP 24	Rate of looked after children per 10,000 population aged under 18	72.9	As at Sep 2016	71.0	RED	65.9	RED	60.0	84*	As at Mar 2016
131	CASCYP 11	Percentage of children looked after who had all of their reviews completed within required timescale	96.2	Apr - Sep 2016	97.1	AMBER	97.8	AMBER			

[\[2\] Data not comparable due to the high number of school leavers whose status is 'not known' which impacts significantly on this indicator](#)

Appendix 4: Volume Measures

Chart 1. Children in need referrals within 12 months of previous referral

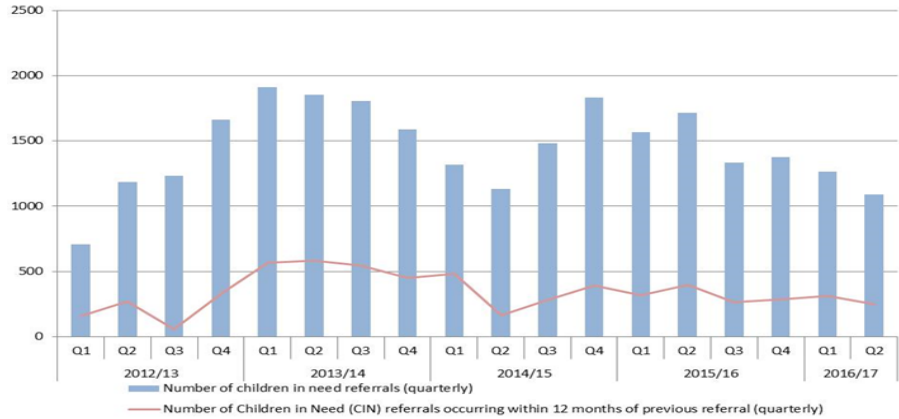


Chart 2. Looked after children cases

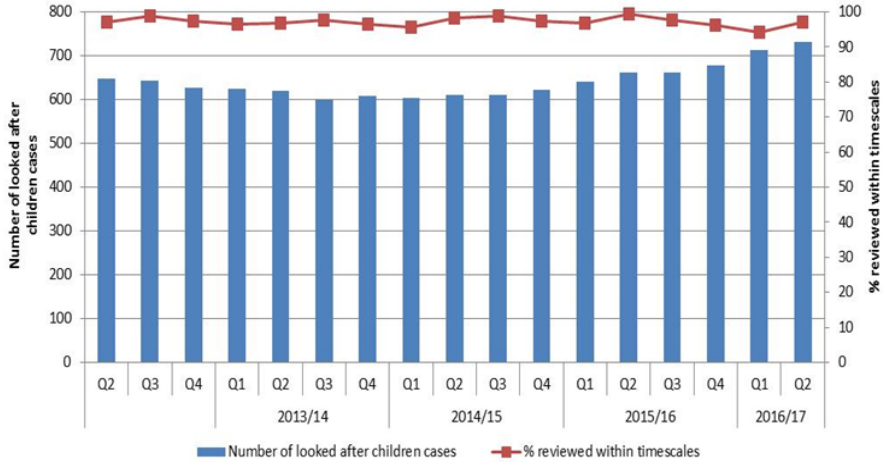


Chart 3. Children with a child protection plan

